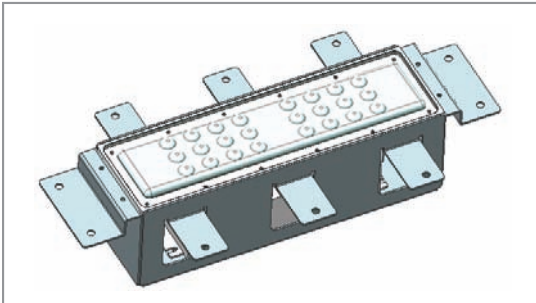




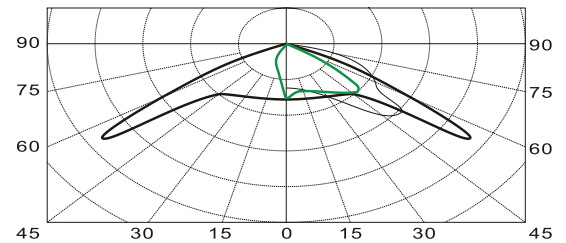
clear-vu
lighting

LED SITE LITE

Part # SL2KFM-2



ILLUMINANCE CHARTS



Applications

- Ideal for construction sites, indoor or outdoor area, overhead, high/low bay applications, factories, warehouses, harsh-environment conditions.
- Comes with easy-to-install flush mounting bracket and protective housing.
- Functions in outdoor environments, operating temperature: -30° to 60°C.

Construction

- Weather-resistant aluminum/steel
- Automotive-grade polycarbonate lens assembly

Electrical

- LED Driver operating voltage: 100 - 277 VAC
- Power Consumption 30 Watts – (approx.)

Optics

- 24 High-output bright white LED's (4745K ~ 6020K, CRI 70)
- Precision Opticlear™ Engine provides IES Type II light distribution to maximize coverage area
- LEDs have a rated life of 70% lumen maintenance at 50,000 hours

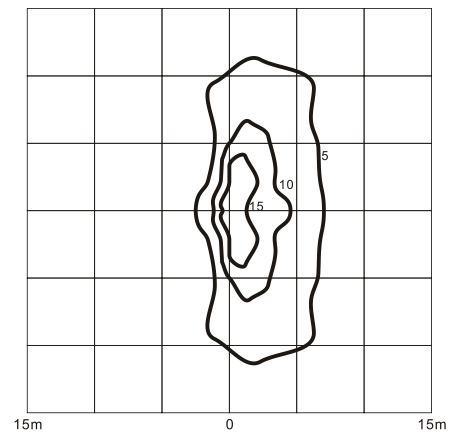
Warranty/Listings

- 3 year limited, parts and labor
- RoHS compliant
- IP67

Photometric Data

- Total Rated Lamp Lumens: 2000

Height 6m



Factor

Height	Factor
3m	4.00
4m	2.25
5m	1.44
6m	1.00
7m	0.73
8m	0.56